

**3.3
Public Transport
Services**



Recent investment in electrification and extension of the rail line to Seaford, Flinders Link and emerging new technologies now provide an opportunity to improve the integration of all transport modes at growth precincts.

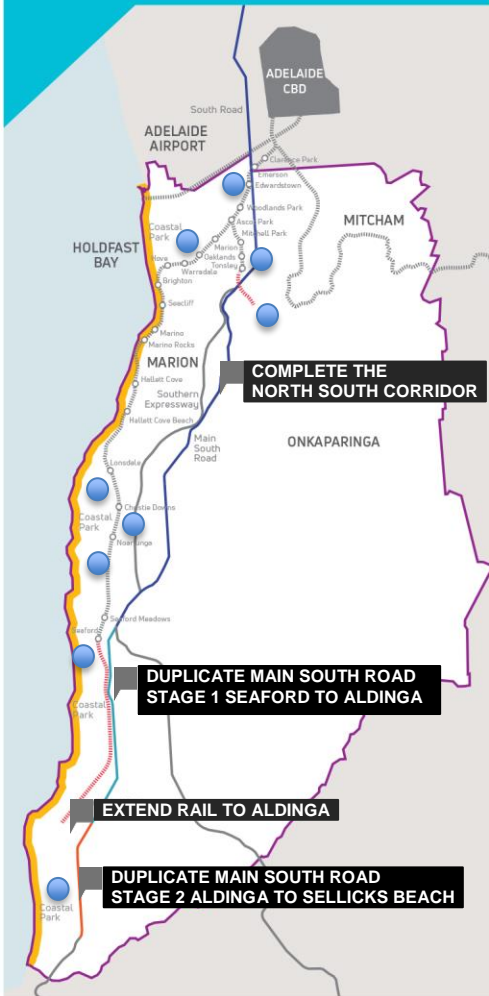
Being able to move easily in, out and around our region is fundamental to meeting people, getting to work, operating a business, moving goods, education, leisure and for community wellbeing.

Reflecting the low density nature of suburbs, around three quarters of employed people travel to work in a car, 3% by bus and 2% by train. Around 65% travel outside the region for work. Consequently access to public transport is critical in planning and design of our growth precinct.

From an infrastructure perspective, efficiency is maximised by the integration between modes of transport, between everyday movement and recreational movement, and with commitment between all transport providers to work together.

Innovative and disruptive emerging new transport technologies such as autonomous and electric vehicles, car share schemes and need for public electric car charge points also provide opportunities to improve connectivity.

Key: ● **INTEGRATED TRANSPORT SERVICES AT GROWTH PRECINCTS**



Call to Action

Develop a regional public transport plan in partnership with the State Government, which capitalises on the opportunities of emerging transport opportunities at our growth precincts.

Enhance Transport options

Connected Region

More Efficient services



For more information go to southernadelaide.com.au

PROUDLY SUPPORTED BY

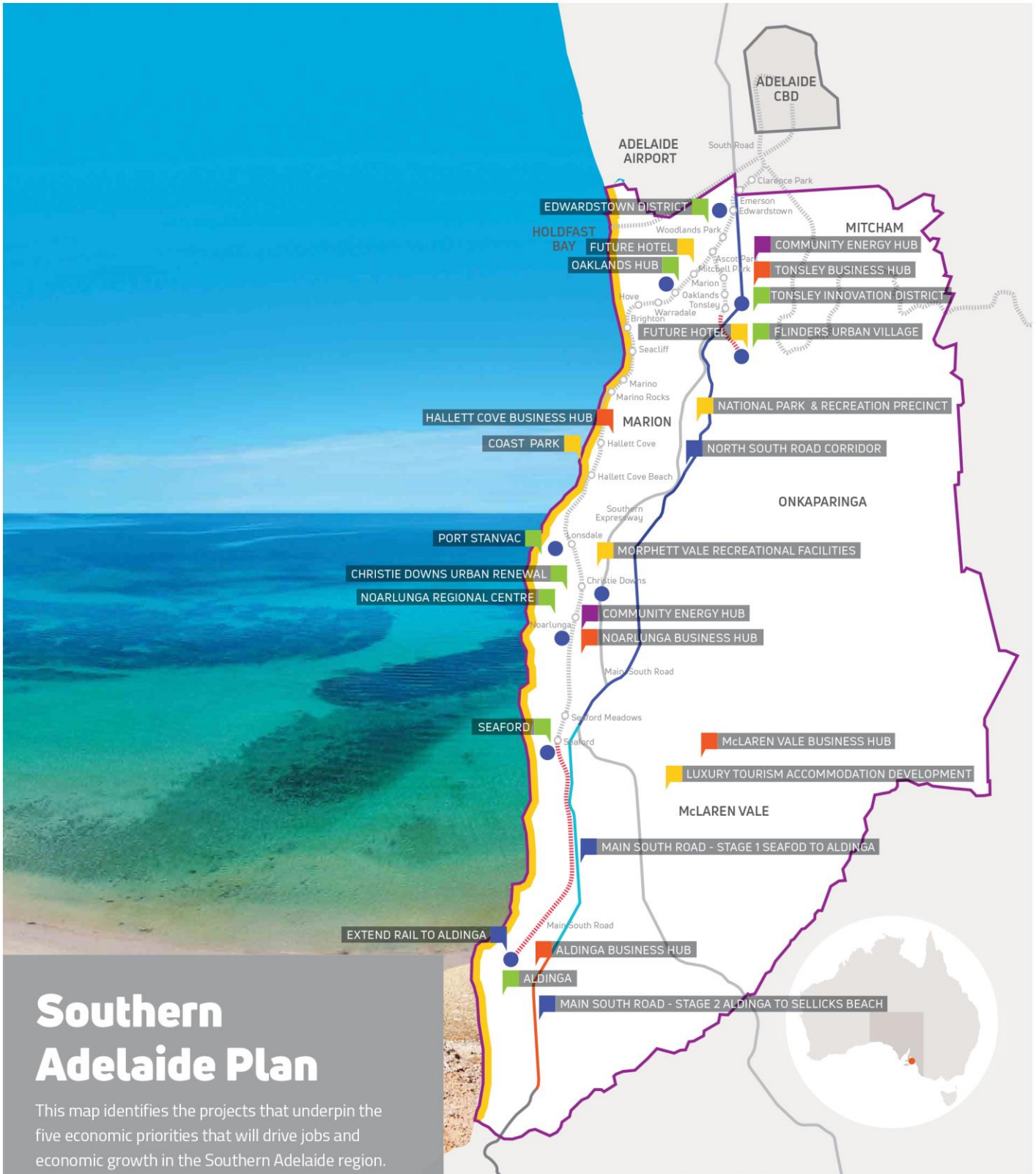
City of Marion marion.sa.gov.au

City of Onkaparinga onkaparingacity.com



CITY OF **MARION**





Southern Adelaide Plan

This map identifies the projects that underpin the five economic priorities that will drive jobs and economic growth in the Southern Adelaide region.

- GROWTH PRECINCTS
- VISITOR AND LIFESTYLE ECONOMY
- INTEGRATED TRANSPORT AND INFRASTRUCTURE
- BUSINESS COMMUNITY
- SMART REGION
- INTEGRATED TRANSPORT SERVICES

Be part of the future

The vision for Southern Adelaide will be achieved by working in collaboration with all stakeholders, including the State and Federal Governments, local businesses and residents. The Board welcomes you to join us to grow our region and enjoy the benefits of a more prosperous economy.